


**OMRON**

 **Singapore Office:**  
**OMRON ELECTRONICS PTE. LTD.**  
438A Alexandra Road, #05-05/08  
(Lobby 2) Alexandra Technopark  
Singapore 119967  
Tel: (65) 6547 6789  
Fax: (65) 6547 6769  
E-mail: mktg\_sg@ap.omron.com

 **Malaysia Office:**  
**OMRON ELECTRONICS SDN. BHD.**  
1101 Level 11 Uptown 1  
1 Jalan SS21/58 Damansara Uptown  
47400 Petaling Jaya, Selangor  
Malaysia  
Tel: (60-3) 7688 2888  
Fax: (60-3) 7688 2833  
E-mail: my\_enquiry@ap.omron.com

 **Thailand Office:**  
**OMRON ELECTRONICS CO. LTD.**  
Rasa Tower 20th Floor  
555 Phaholyothin Road  
Chatuchak, Bangkok  
10900, Thailand  
Tel: (66-2) 937 0500  
Fax: (66-2) 937 0501  
CRM Call Centre: (66-2) 942 6700  
E-mail: th\_enquiry@ap.omron.com

 **Indonesia Office:**  
**PT. OMRON ELECTRONICS**  
Graha Pratama Building, 3A Floor  
Jl. M.T. Haryono Kav 15  
Jakarta Selatan 12810  
Indonesia  
Tel: (62-21) 8370 9555  
Fax: (62-21) 8370 9550  
E-mail: id\_enquiry@ap.omron.com

 **Philippines Office:**  
**OMRON ASIA PACIFIC PTE. LTD.**  
**MANILA REPRESENTATIVE OFFICE**  
2nd Floor, Kings Court II Building  
2129 Do Chino Roces Avenue  
Corner Dela Rosa Street  
1231 Makati City, Metro Manila  
Philippines  
Tel: (63-2) 811 2831  
Fax: (63-2) 811 2583  
E-mail: ph\_enquiry@ap.omron.com

 **Australia Offices:**  
**Sydney Office:**  
**OMRON ELECTRONICS PTY. LTD.**  
Omron House  
71 Epping Road, North Ryde  
Sydney, New South Wales 2113  
Australia  
Tel: (61-2) 9878 6377  
Fax: (61-2) 9878 6981  
Toll Free: 1800 678838  
E-mail: au\_enquiry@ap.omron.com

**Melbourne Office:**  
**OMRON ELECTRONICS PTY. LTD.**  
Axxess Corporate Park  
Unit 98, 45 Gilby Road  
Mt Waverley Victoria 3149  
Australia  
Tel: (61-3) 8588 2600  
Fax: (61-3) 8588 2690  
E-mail: au\_enquiry@ap.omron.com

**Brisbane Office:**  
**OMRON ELECTRONICS PTY. LTD.**  
Unit 14, 1378 Lytton Road  
Hemmant 4174  
Brisbane Australia  
Tel: (61-7) 3859 3900  
Fax: (61-7) 3348 8701  
E-mail: au\_enquiry@ap.omron.com

**Adelaide Office:**  
**OMRON ELECTRONICS PTY. LTD.**  
Level 1, Suite 27  
213 Greenhill Road  
Eastwood, SA 5063  
Australia  
Tel: (61-8) 8274 3727  
Fax: (61-8) 8357 9634  
E-mail: au\_enquiry@ap.omron.com

 **New Zealand Office:**  
**OMRON ELECTRONICS LTD.**  
65 Boston Road, Mt Eden  
Private Bag 92620  
Symonds Street, Auckland  
New Zealand  
Tel: (64-9) 358 4400  
Fax: (64-9) 358 4411  
E-mail: nz\_enquiry@ap.omron.com

 **India Offices:**  
**Bangalore Office:**  
**OMRON AUTOMATION PVT. LTD.**  
No. 43, G.N. Complex  
St. Johns Road  
Bangalore - 560 042  
India  
Tel: (91-80) 4146 6400 / 4146 6401  
Fax: (91-80) 4146 6403  
E-mail: bangalore\_enquiry@ap.omron.com

**New Delhi Office:**  
**OMRON AUTOMATION PVT. LTD.**  
B-1/A-15 (First Floor)  
Mohan Co-operative Industrial Estate  
Mathura Road  
New Delhi - 110 044  
India  
Tel: (91-11) 3088 8215 / 3088 8216  
Fax: (91-11) 4163 8218  
E-mail: newdelhi\_enquiry@ap.omron.com

**Mumbai Office:**  
**OMRON AUTOMATION PVT. LTD.**  
102 & 103, Meadows, Sahar Plaza,  
Andheri-Kurla Road, Andheri East  
Mumbai - 400 059  
India  
Tel: (91-22) 6679 2767  
Fax: (91-22) 6679 2768  
E-mail: mumbai\_enquiry@ap.omron.com

 **Vietnam Offices:**  
**OMRON ASIA PACIFIC PTE. LTD.**  
**HANOI REPRESENTATIVE OFFICE**  
6th Floor, 92 Hoang Ngan Street  
Trung Hoa, Cau Giay  
Hanoi, SR Vietnam  
Tel: (84-4) 556 3444  
Fax: (84-4) 556 3443  
E-mail: hn\_enquiry@ap.omron.com

**HO CHI MINH REPRESENTATIVE OFFICE**  
99 Nguyen Thi Minh Khai Street  
District 1, Ho Chi Minh City  
SR Vietnam  
Tel: (84-8) 839 6666  
Fax: (84-8) 830 1279  
E-mail: hcm\_enquiry@ap.omron.com

Asia Pacific Head Office:  
**OMRON ASIA PACIFIC PTE. LTD.**  
438A Alexandra Road  
#05-05/08  
(Lobby 2) Alexandra Technopark  
Singapore 119967  
Tel: (65) 6835 3011 Fax: (65) 6835 2711  
E-mail: ask@ap.omron.com  
Website: [www.omron-ap.com](http://www.omron-ap.com)

Authorized Distributor

Cat. No. V101-E1-01  
Printed in Singapore  
0808

**OMRON**

Programmable Terminal

**NP** Series

**Easy Setup with the Low-cost,  
Compact NP Series**

**NP**



realizing

# Simpler and More Versatile. OMRON's Compact NP Series Connect!

Easier connection to OMRON PLCs and Temperature Controllers, plus high-speed transfer of image data via USB.



**Improved Efficiency and Speed from Set Up to Operation!**  
What do you need in a NP Series? Display visibility, information capacity, low costs? OMRON provides all of these and goes further to reduce the TCO, including operating efficiency, by enabling connection of various control devices, easy design work, and the smoothest possible connections.

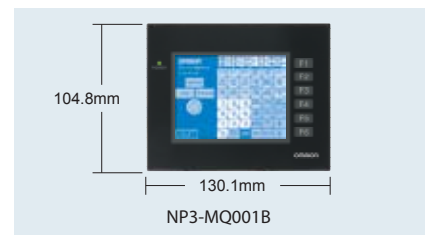
Note : The above illustration is a conceptual diagram only. For information on connecting the PT, refer to the user manuals.



**Easy Assembly**

**Compact Operating Section**  
Compact design reduces the mounting work.

At 130.1×104.8mm (NP3:W×H), this NP Series is small enough to be mounted in the same space as a handful of switches, and it requires only one mounting hole in the control panel. You get less work and a less crowded operating section.



**Install in Most Environments**  
IP65 water resistance.

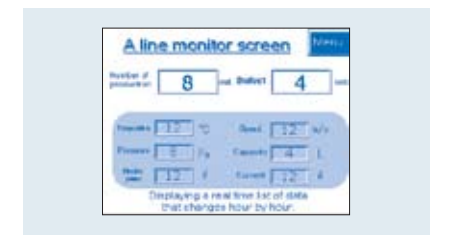
The front of the panel has IP65 water resistance, allowing the NP Series to be used in environments where mist or splashing cooling water is present.

Note: The unit may not be able to be used in locations with long-term exposure to oil and water. For details on the installation environment, refer to the user manual.



**Compact, Yet Plenty of Information**  
The NP3 can display the same amount of information as a 5-inch NP Series.

Using a 3.8-inch QVGA LCD, this NP3 is able to clearly display 8 grayscale levels in monochrome. The advanced display capabilities equivalent to those of a 5-inch NP Series improve the efficiency of onsite operations.

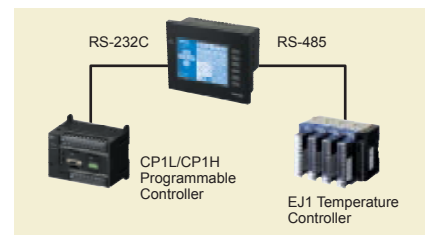


## Hardware



**Reduce Connection Design and Onsite Work**  
Excellent matching with OMRON control devices.

The NP Series provides an OMRON CP1L/CP1H PLC Programming Console function, and connects to OMRON EJ1 Temperature Controllers. The NP Series can be operated immediately using the sample screens included with the NP-Designer (Support Software).



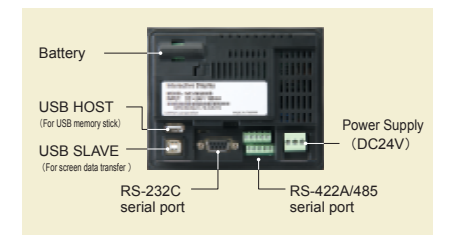
**Use PLCs from Other Companies**  
Multivendor support is provided for major global manufacturers.

Including OMRON and Mitsubishi, support is provided for PLCs from major global manufacturers. The NP Series can be used with your current PLC without redesigning the system. It doesn't matter if you use a different PLC manufacturer for each project.



**Reduced Wiring Work**  
Wiring with a single cable.

The NP Series is equipped with both a RS-232 port and a switchable RS-422A/485 port so you can connect to a PLC or Temperature Controller with a single cable. You get reduced wiring work and easier maintenance.



\* NP3-MQ000B, NP3-MQ000, NP3-MQ001B, NP3-MQ001

## Connectability

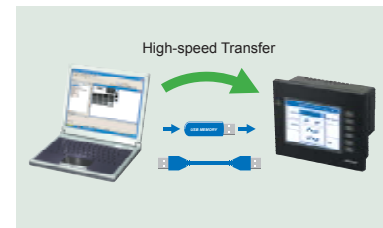
# Compact design and easy setup! Compatible with your current PLC.



### Use a Computer USB Port

Transfer screens at high speed.

The USB interface lets you take full advantage of the computer software environment. Transfer screens created on the computer to the NP Series at high speeds. Or use a USB memory stick to transfer screen data without bringing a computer on-site.



### Easier On-site Operation

Models are available with either of two function key layouts.

Models with two different function key layouts are available to meet the needs of your application design. The NP Series case is also available in two different colors: black or silver.



### Operation

Use the Same Equipment Worldwide

Multi-language Support.

The NP Series, screens, and Support Software are supported in English, Chinese, many European languages, and Japanese. Also, the NP Series meets international standards so it can be exported or imported across country borders easily.



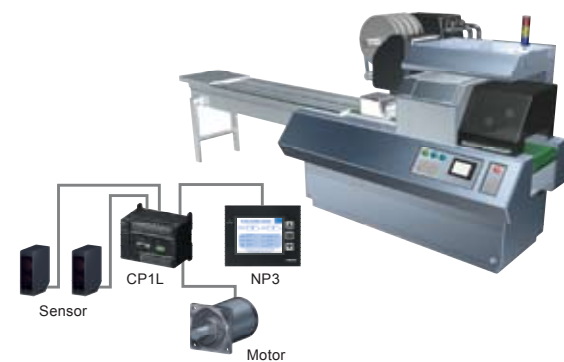
## NP Series Line Up

	3Key Type	6Key Type
<b>3.8 inches</b> Monochrome STN QVGA 320×240 pixels	NP3-MQ000B    NP3-MQ000 	NP3-MQ001B    NP3-MQ001 
<b>5.7 inches</b> Monochrome STN QVGA 320×240 pixels	NP5-MQ000B    NP5-MQ000 	NP5-MQ001B    NP5-MQ001 
<b>5.7 inches</b> Color STN QVGA 320×240 pixels	NP5-SQ000B    NP5-SQ000 	NP5-SQ001B    NP5-SQ001 

### Example of Applications That Provide Added Value to Equipment

#### Packing Machines

Simplified design and processing.  
Operated by touching the screen.



- Design** Easy screen design by using NP-Designer.
- Assembly** No panel processing and wiring for lamp switches needed.
- Operation** Operation and monitoring status can now be achieved with one NP Series. No need for additional processing for additions or modifications.

#### Food Processing Equipment

Direct connection to Temperature Controllers.  
Operate the NP Series even with wet hands.



- Design** Enhanced design with silver case that matches stainless-steel equipment.
- Assembly** Connect directly to EJ1 to reduce wiring.
- Operation** IP65 protection allows application in wet environments.

## Ordering Information

Model name	Specifications				Model number
	Effective display area	Number of pixels	Number of function keys	Case color	
NP3	3.8-inch STN monochrome	320×240	3	Black	NP3-MQ000B
				Silver	NP3-MQ000
			6	Black	NP3-MQ001B
				Silver	NP3-MQ001
NP5	5.7-inch STN monochrome	320×240	3	Black	NP5-MQ000B
				Silver	NP5-MQ000
			6	Black	NP5-MQ001B
				Silver	NP5-MQ001
	5.7-inch STN color	320×240	3	Black	NP5-SQ000B
				Silver	NP5-SQ000
			6	Black	NP5-SQ001B
				Silver	NP5-SQ001

## Performance / Specifications

Series	NP3				NP5							
	3.8 STN LCD				5.7 STN LCD							
Model number	NP3-MQ000	NP3-MQ001	NP3-MQ000B	NP3-MQ001B	NP5-MQ000	NP5-MQ001	NP5-MQ000B	NP5-MQ001B	NP5-SQ000	NP5-SQ001	NP5-SQ000B	NP5-SQ001B
Display device	Monochrome LCD				Monochrome LCD				Color LCD			
Effective display area	Width 78.8mm × height 59.6 mm (3.8 inches)				Width 121.4mm × height 92.6 mm (5.7 inches)							
Case color	Silver		Black		Silver		Black		Silver		Black	
Number of function keys	3	6	3	6	3	6	3	6	3	6	3	6
Display color	Monochrome/8 grayscale levels								256 colors			
Number of pixels	320 pixel horizontal × 240 pixel vertical											
View angle	Left / right ±30°, Top 10°, Bottom 30°											
Screen data capacity	3MB											
Image data (BMP or JPG images)	8 grayscale levels						256 colors					
Memory Card	Supported (Use USB memory stick (FAT32) )											
Touch panel	Method	Resistive membrane analog type										
	Input	Pressure-sensitive										
	Service life	1,000,000 touch operations min.										
Serial Communications	COM1 Connector	Conforms to EIA RS-232C D-Sub female 9-pin connector 5 VDC output (250 mA max.) through pin 6										
	COM2 Connector	Conforms to RS-422A / 485 10-pin terminal block										
USB SLAVE Specifications	USB rating	USB1.1										
	Connector	TYPE-B (Slave)										
USB HOST Specifications	USB rating	USB1.1										
	Connector	TYPE-A (Host)										

## General Specifications

Item	Specifications	
Rated power supply voltage	24 VDC	<p>(Note 1) When a STN LCD display device is used, the display quality will decline (e.g., the contrast ratio will be reduced) if the temperature exceeds 40°C. Also, when the temperature drops, the response speed is lowered due to characteristics of liquid crystals.</p> <p>(Note 2) Operate the PT within the temperature and humidity ranges shown in the following diagram</p> <p>(Note 3) May not be applicable in locations with long-term exposure to water or oil.</p>
Allowable voltage range	21.6 to 27.6 VDC (24 VDC -10% to +15%)	
Allowable input power interruption time	No restriction	
Power consumption	12W max	
Ambient operating temperature	0 to 50°C (See notes 1 and 2)	
Storage temperature	-20 to + 60°C	
Ambient operating humidity	35 to 85%RH with no condensation (0 to 40°C) (See notes 2.) 35 to 50%RH with no condensation (40 to 50°C) (See notes 2.)	
Operating environment	No corrosive gases	
Noise immunity	Conforms to IEC61000-4-4, 2 KV (power lines)	
Vibration resistance (during operation)	5 to 9 Hz with 3.1 mm amplitude and 9 to 150 Hz with 9.8 m/s <sup>2</sup> acceleration for 30 min in each of X, Y, and Z directions	
Shock resistance (during operation)	147 m/s <sup>2</sup> 3 times in each of X, Y, and Z directions	
Weight	NP5 : 900 g max NP3 : 500g max	
Enclosure rating	Front panel: IP65F oil proof (See note 3)	
Battery life	5 years (at 25°C)	
International standards	EC Directives, cULus (UL508)	

## Multivendor List

Brands	Host	Brands	Host
OMRON	Host link: C/CPM/CQM PLC	Mitsubishi	FX / FX2N CPU port
	Host link: CS/CJ/CP1/CV/CVM PLC		FX3U CPU port
	NT link (1:N) (*)		FX Series Computer Link
	NT link (1:1)		A Series Computer Link
	EJ1		A2A/A2AS/A2USH A1SH/A3N/A2ASH CPU Port
Allen Bradley	MicroLogix	Modicon	Q Series CPU Port
	SLC5		Q Series Computer Link
LG (LS)	Master-K120S/200S		TSX Micro (Uni-Telway) (*)
	Glofa GM6 CNET	NEZA (Uni-Telway) (*)	
	Master-K CNET	TWIDO	
Matsushita	FP Series	Siemens	S7 200
	984 RTU / ASCII (Master)		S7-300 (with PC Adaptor)
Modbus	RTU / ASCII Hex Address (Master)		S7-300 (without PC Adaptor) (*)
	RTU / ASCII nW, RTU 2W (Master)	GE Fanuc	90 Series SNP
	RTU / ASCII (Slave)	Keyence	KV/KZ Series
		NULL	Null driver

\* Please refer to NP Host Connection Manual for details.

## Dimensions

